

RESPONSE AND RESILIENCE TO HURRICANES IN THE CARIBBEAN IN A CHANGING CLIMATE: BEST PRACTICES AND LESSONS LEARNED

Elizabeth Riley
Executive Director, CDEMA
3 October 2024





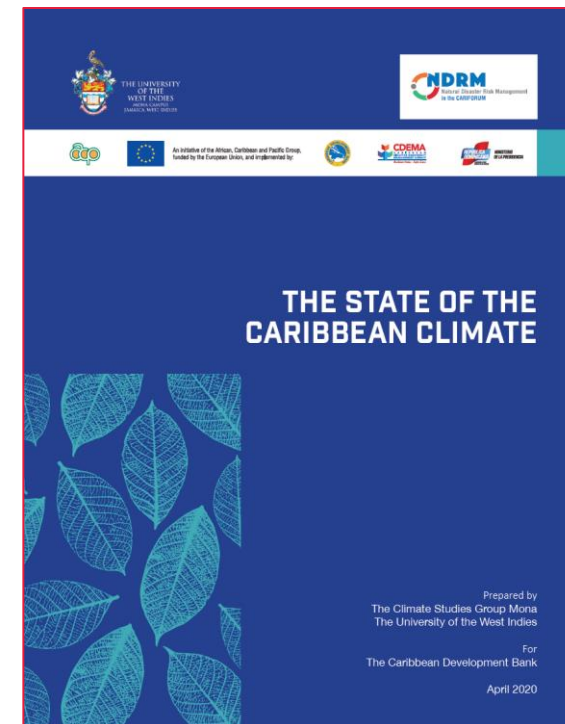
THE STATE OF THE CARIBBEAN CLIMATE – 2020 REPORT

All climate parameters are
changing

SLR to reach or exceed 1m by end
of Century

Air and Sea Surface Temperatures
trending upwards. Region may be
up to 17% drier by end of century;
Changing rainfall patterns with
more intense wet seasons
(landslides and flooding)

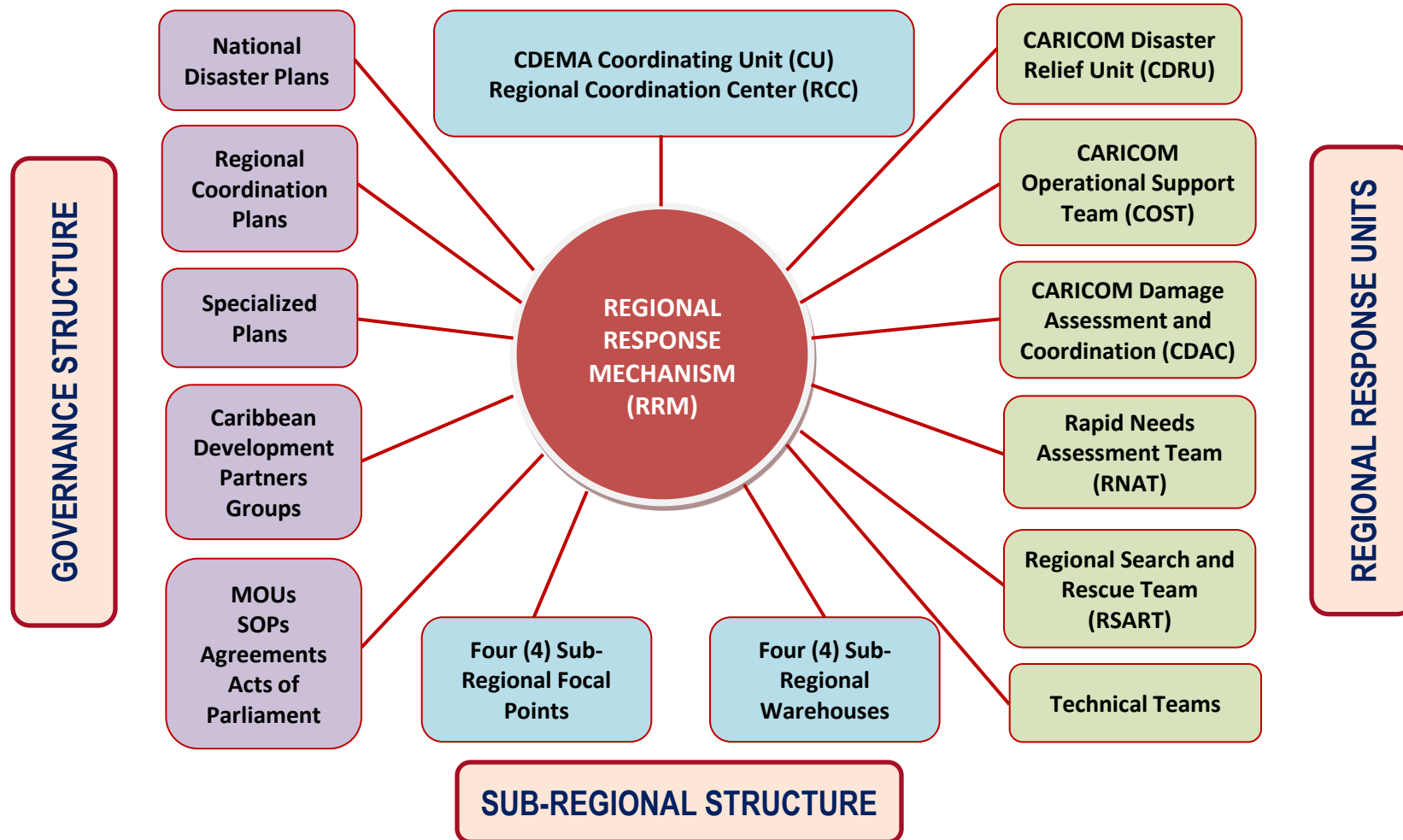
Anticipated 80% increase in the
frequency of Category 4 & 5
Atlantic Hurricanes over the next
80 years



<https://www.caribank.org/publications-and-resources/resource-library/publications/state-caribbean-climate>



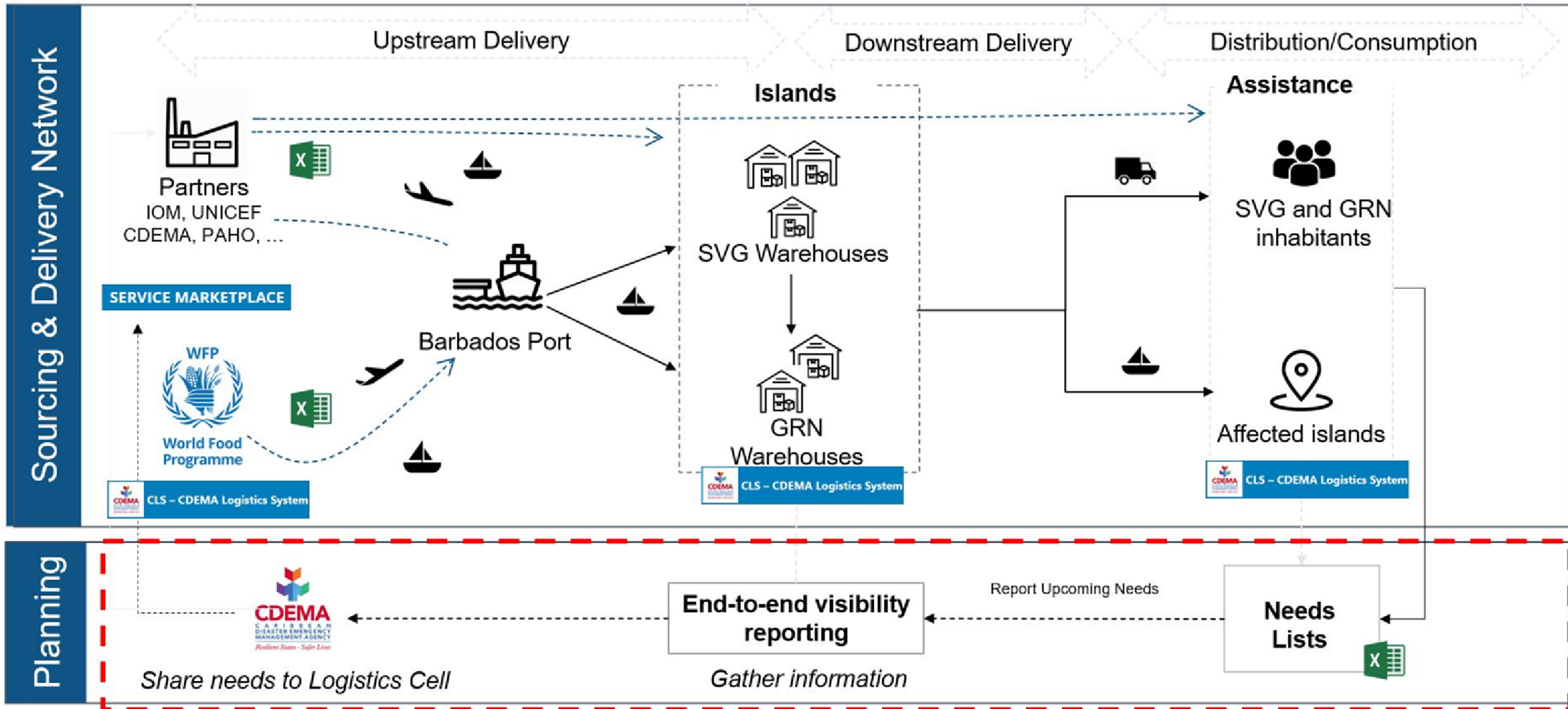
CONCEPTUAL FRAMEWORK FOR THE REGIONAL RESPONSE MECHANISM



MULTI-HAZARD EARLY WARNING SYSTEMS



Hurricane Beryl Emergency Response – SC Network



CARIBBEAN RESILIENT RECOVERY FACILITY THEMATIC CLUSTERS AND LEAD INSTITUTIONS

1

RECOVERY CAPACITIES

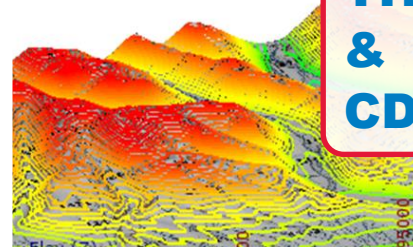
ABILITY BUILD



CDEMA

2

RECOVERY
INFORMATION and
KNOWLEDGE



**THE UWI
&
CDEMA**

3

RECOVERY FINANCING



**CBD;
CCRIF SPC
& CDF**

4

RECOVERY SOLUTIONS



5

MONITORING &
EVALUATION



THANK YOU

Elizabeth Riley – Executive Director

Elizabeth.riley@cdema.org

